

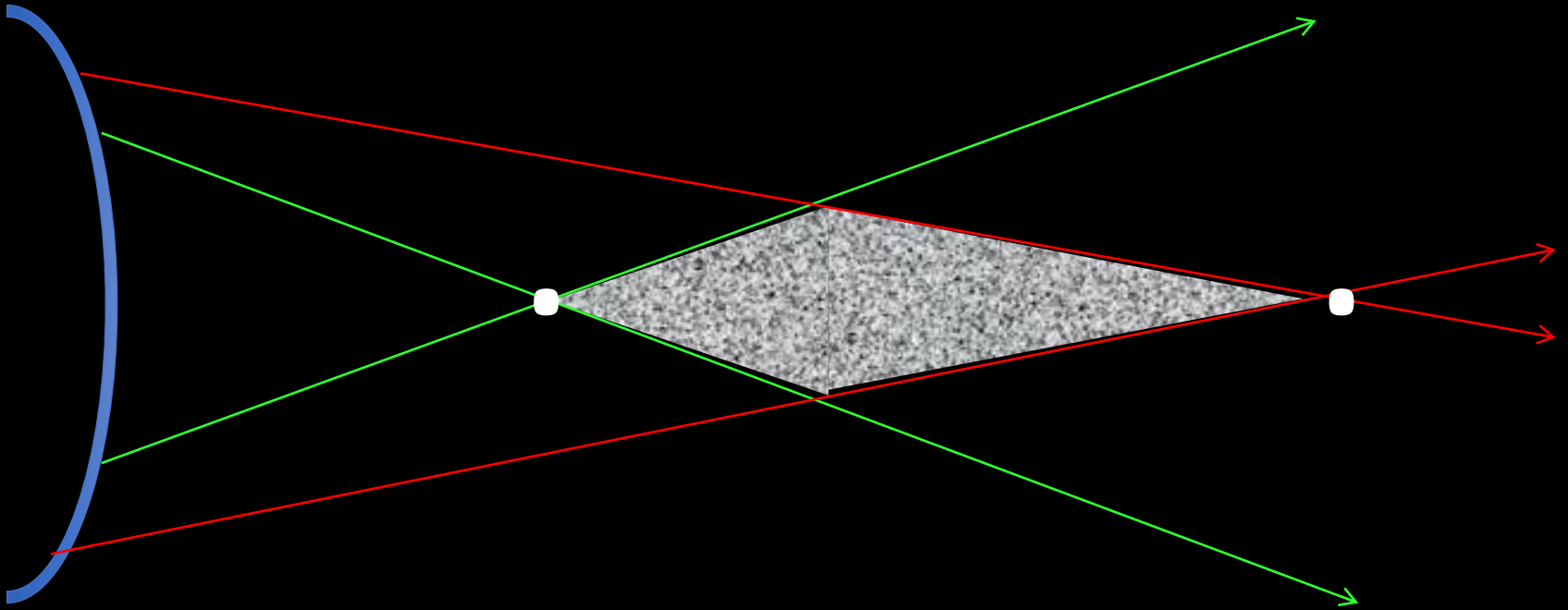
CTF

FOCO TRANSICIONAL CONTINUO

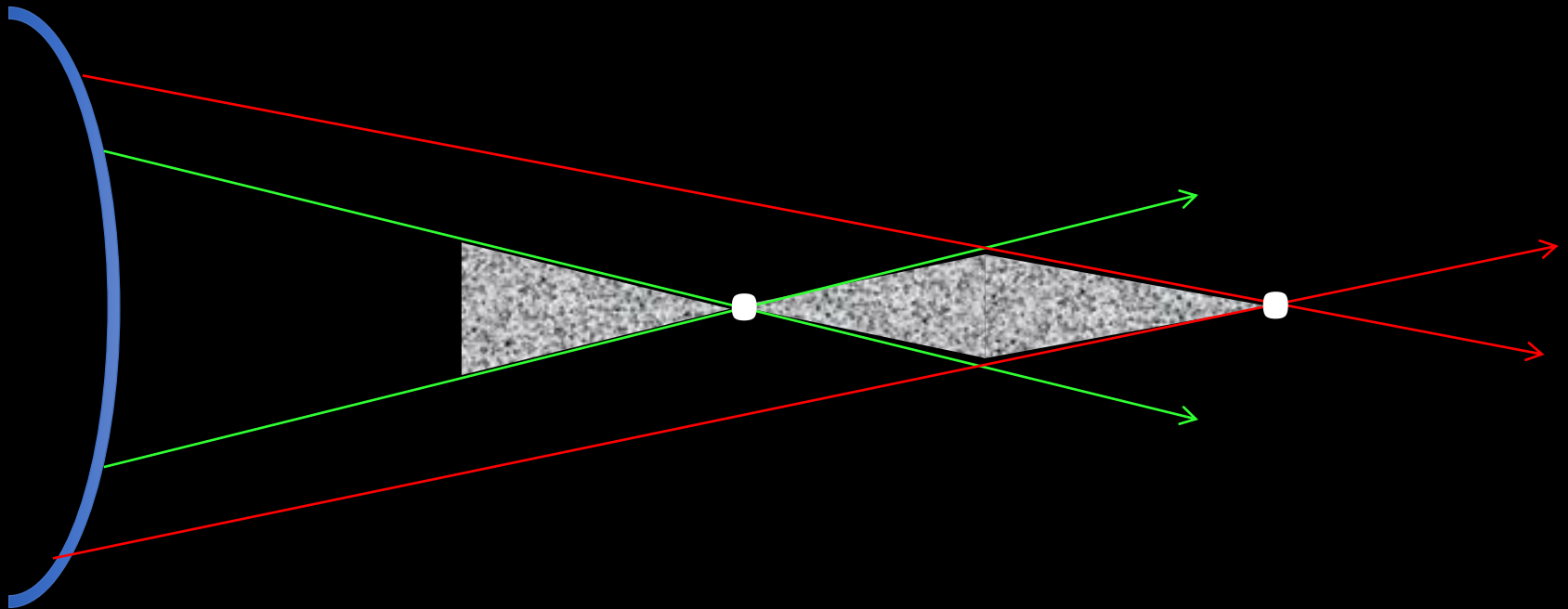


Dr. Mariano Royo

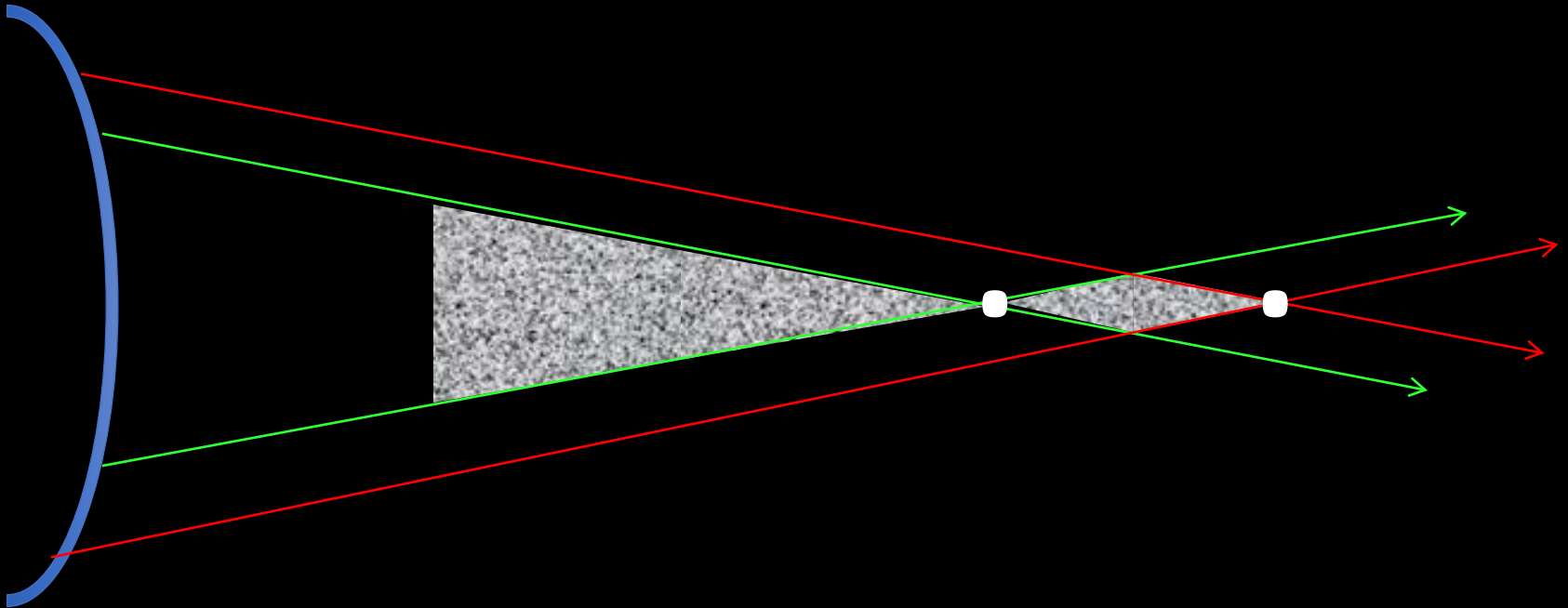
LENTE BIFOCAL



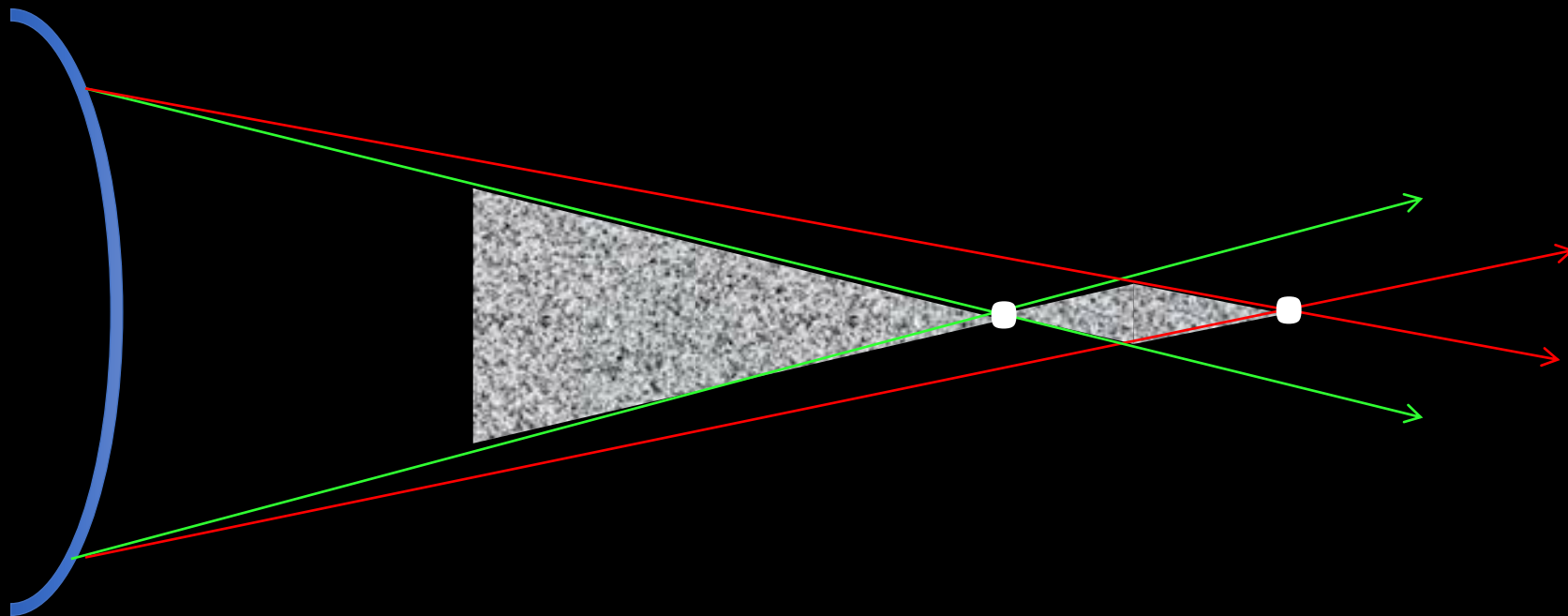
LENTE BIFOCAL



LENTE BIFOCAL

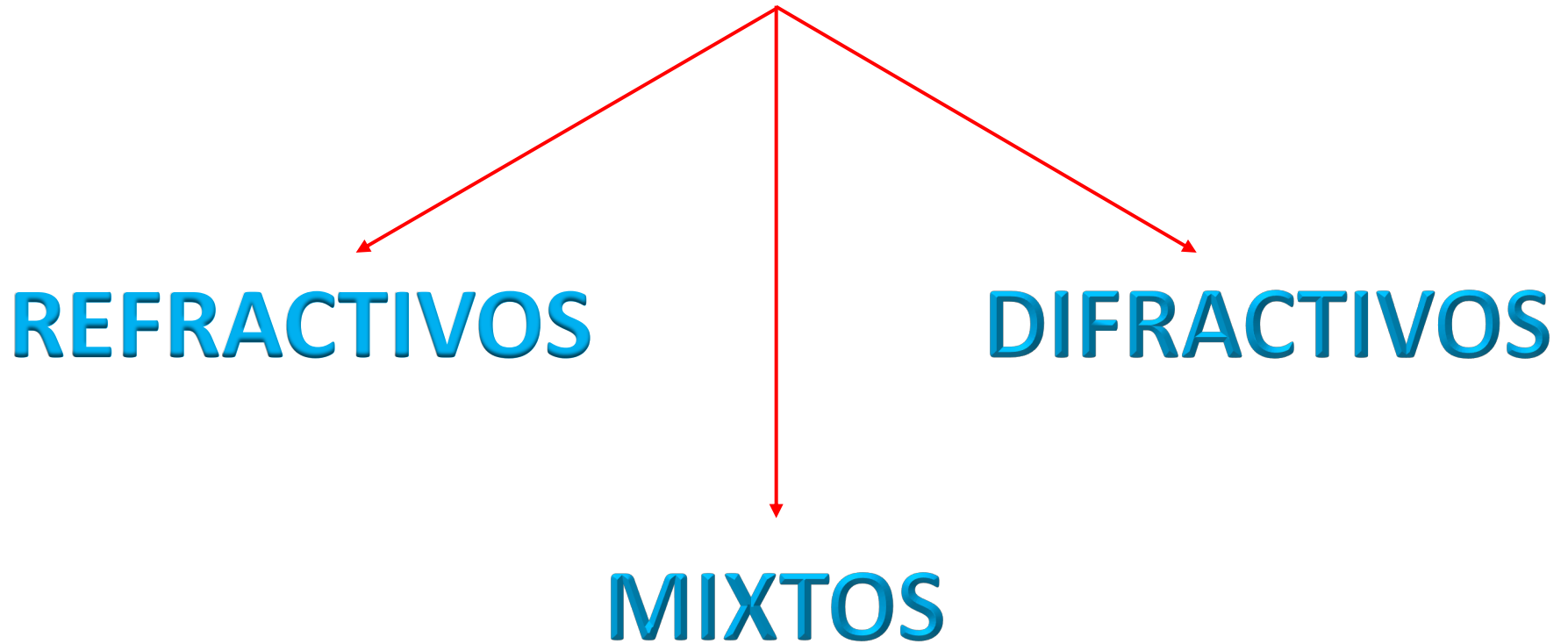


LENTE BIFOCAL DIFRACTIVA

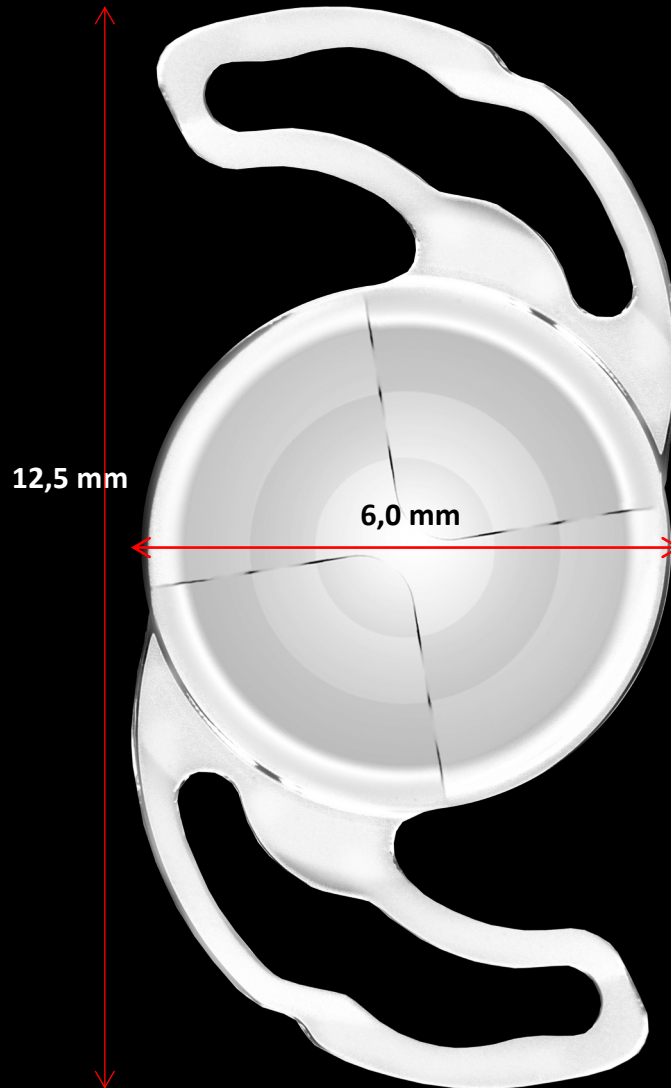


¡PERDIDA DE LUZ!

NUEVOS SISTEMAS MULTIFOCALES:



Precizon Presbyopic



Hapticos C-loops modificado

Angulación 0°

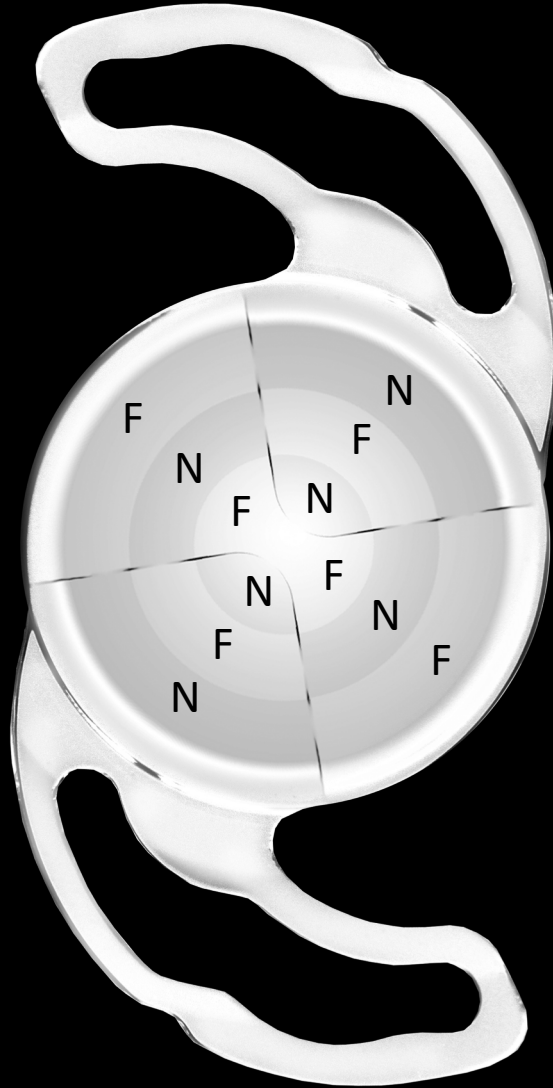
HEMA 65% / EOEMA35%

Incisión 2,2 mm – 2,4 mm

+5.0 D a +35.0 D con pasos de 0.5 D.

Adición +2.75D

Precizon Presbyopic



Hapticos C-loops modificado

Angulación 0°

Barrera anti OCP



Optica: 50% L / C

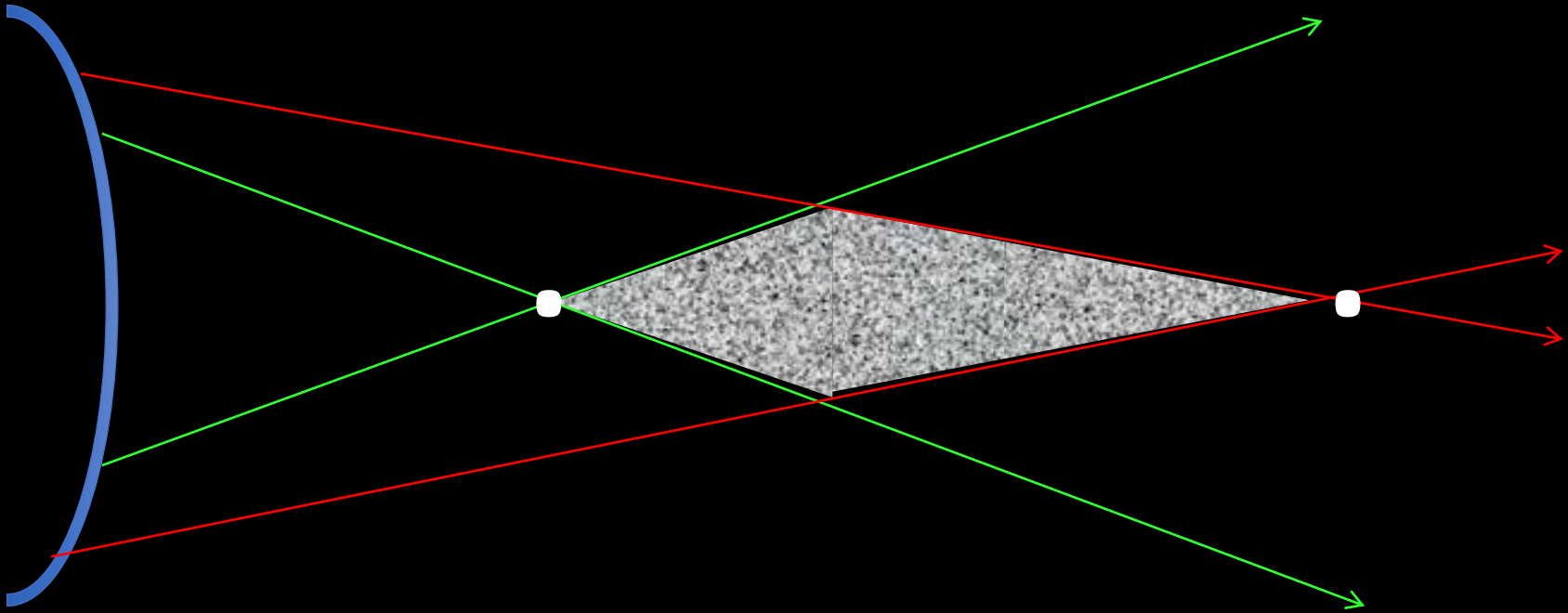
HEMA 65% / EOEMA35%

Incisión 2,2 mm – 2,4 mm

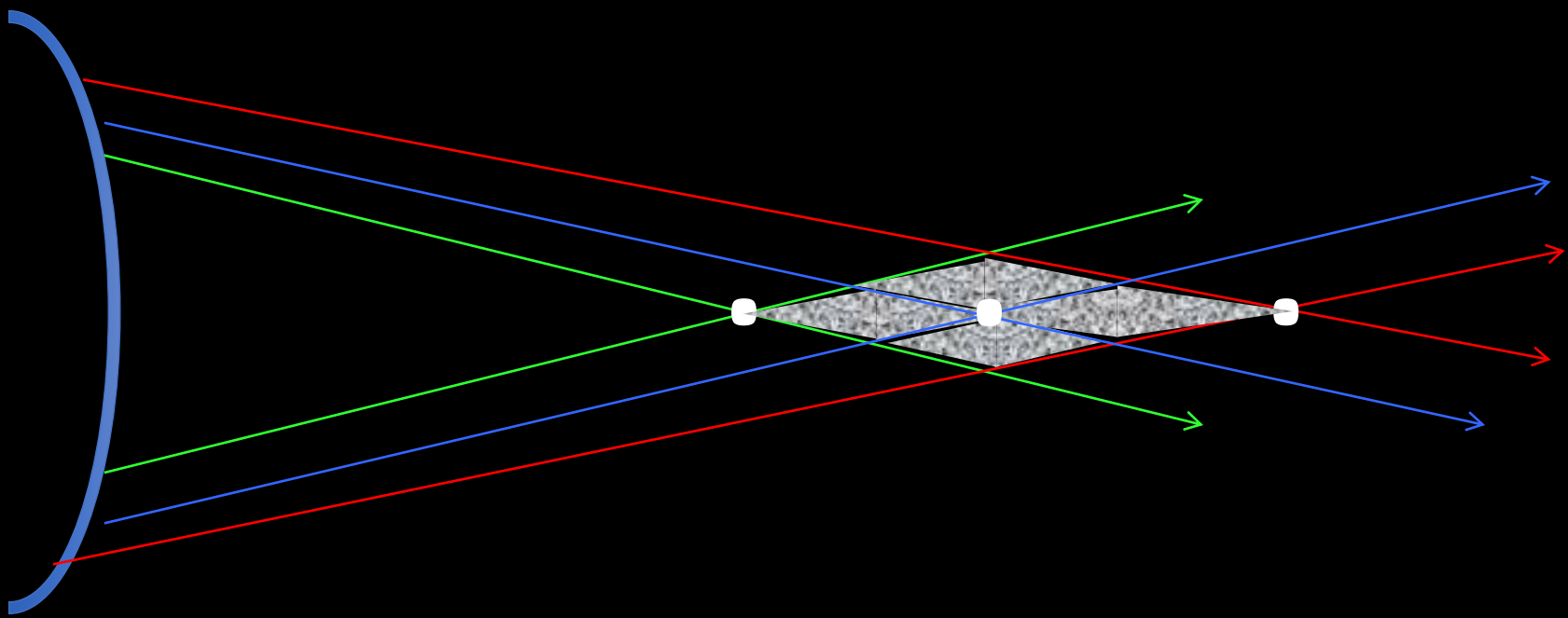
+5.0 D a +35.0 D con pasos de 0.5 D.

Adición +2.75D

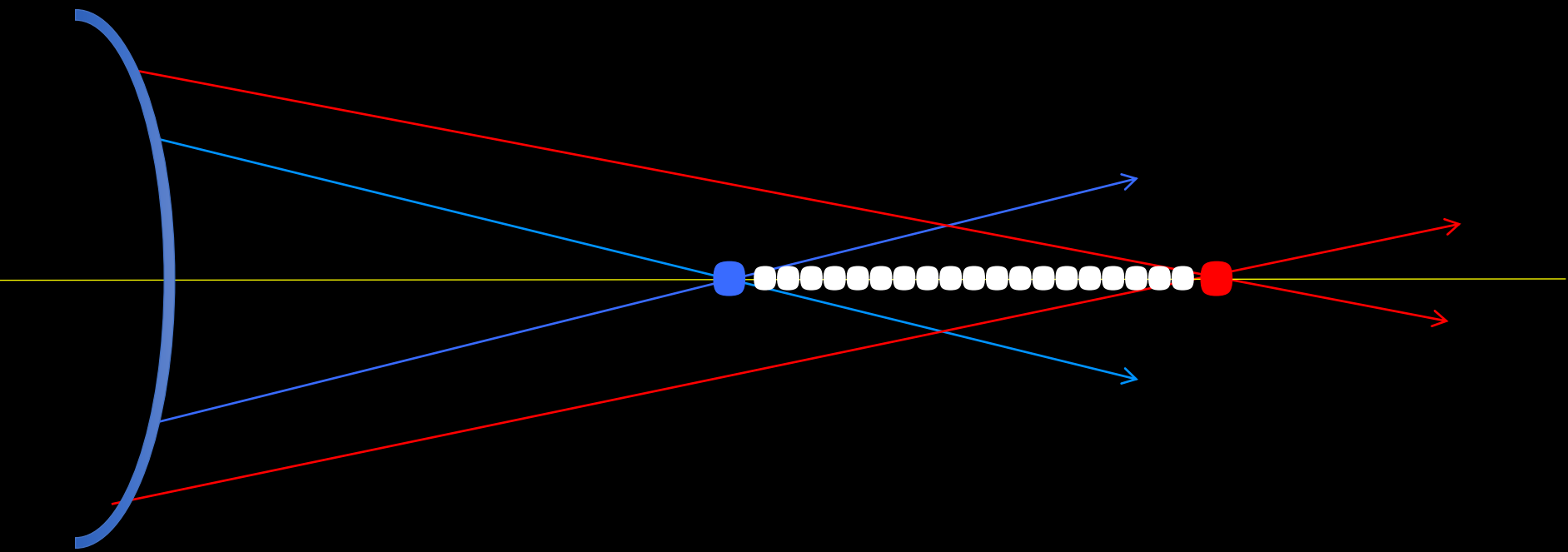
LENTE BIFOCAL



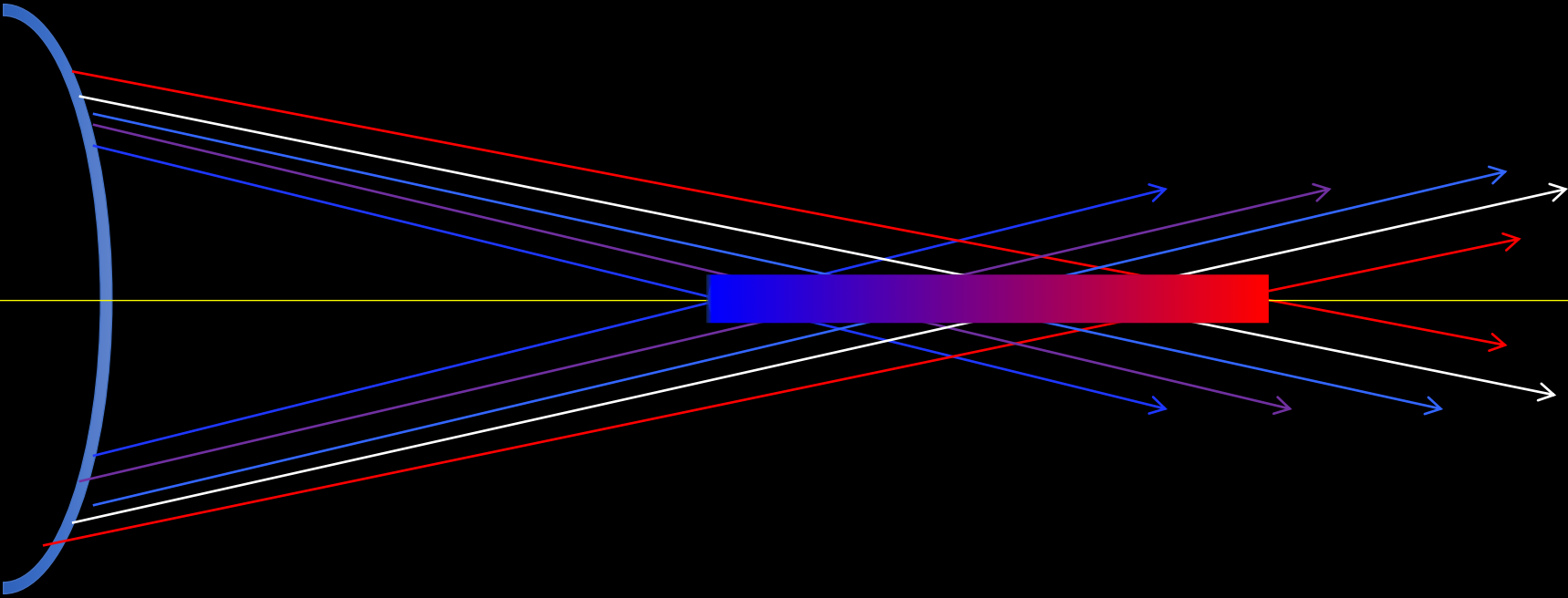
LENTE TRIFOCAL



CTF

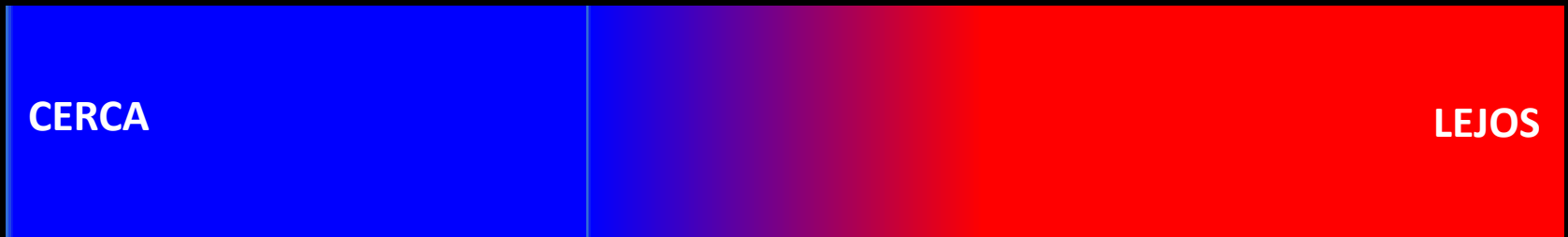


CTF



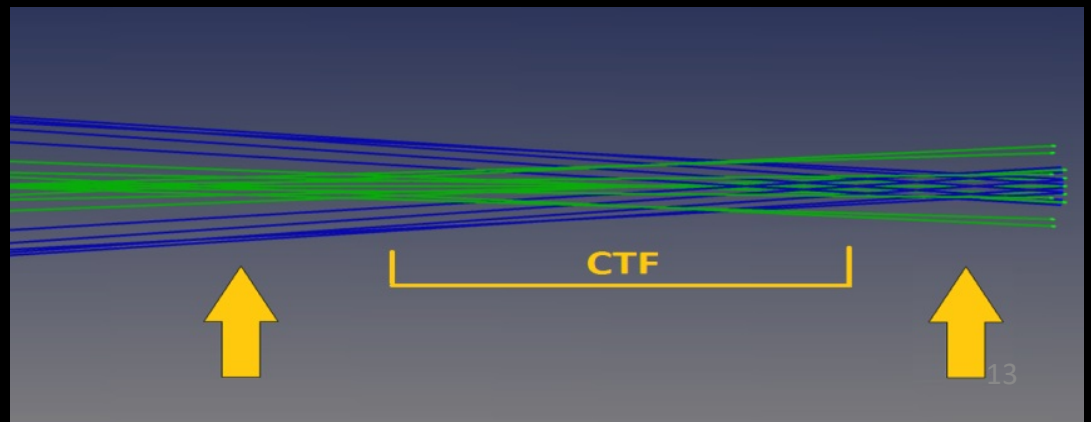
CTF

“UN PASO ADELANTE
CON UNA MIRADA ATRAS”



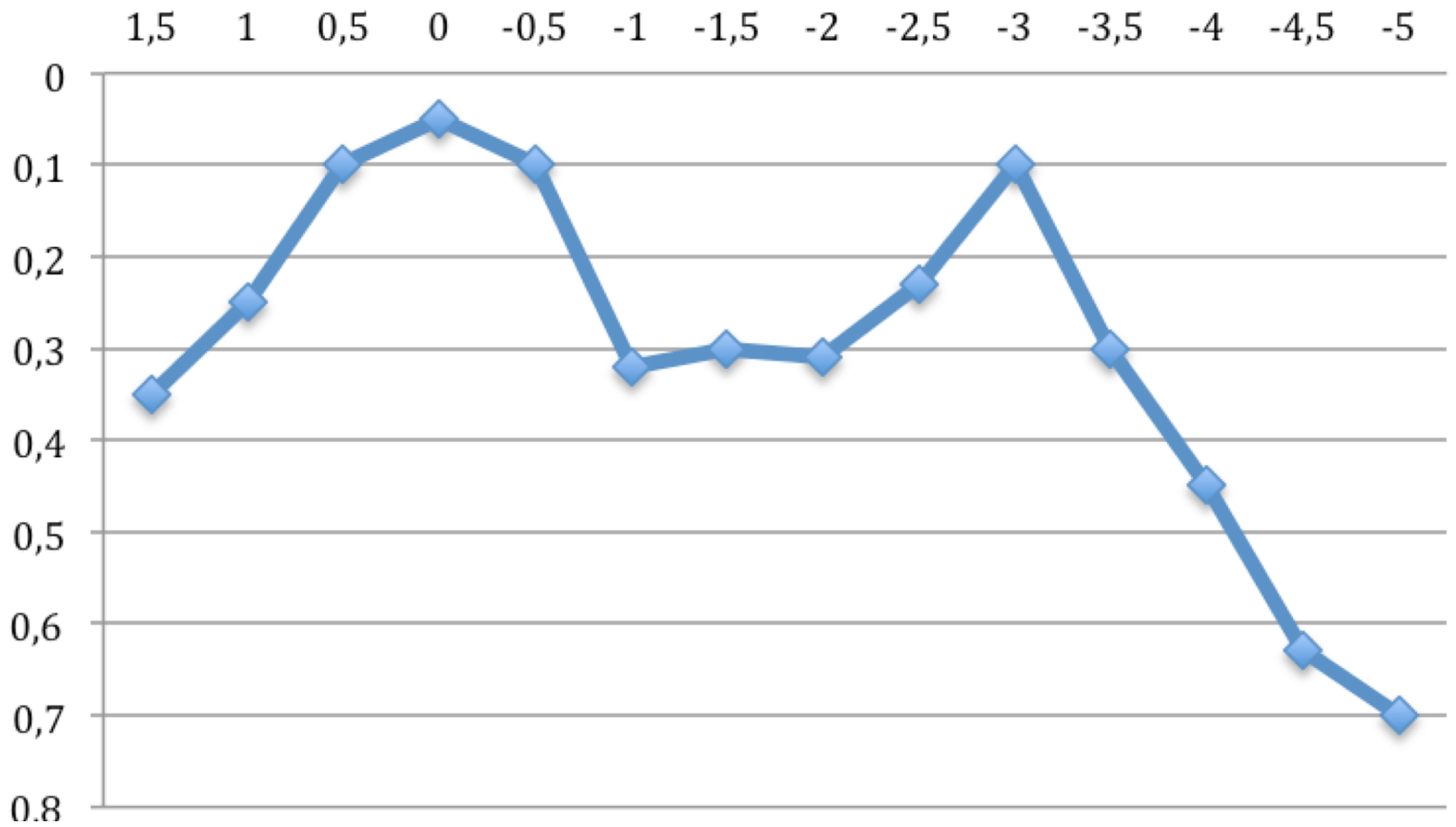
**FOCO PROGRESIVO
ENTRE DOS PUNTOS FOCALES**

NO PERDIDA DE LUZ



Defocus (D)

V.A. log MAR



BINOCULAR DEFOCUS CURVE

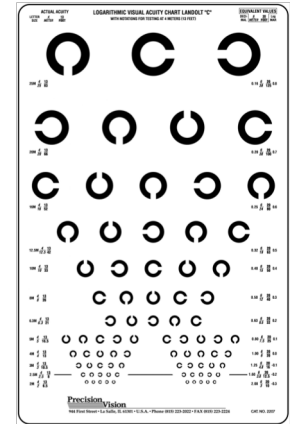
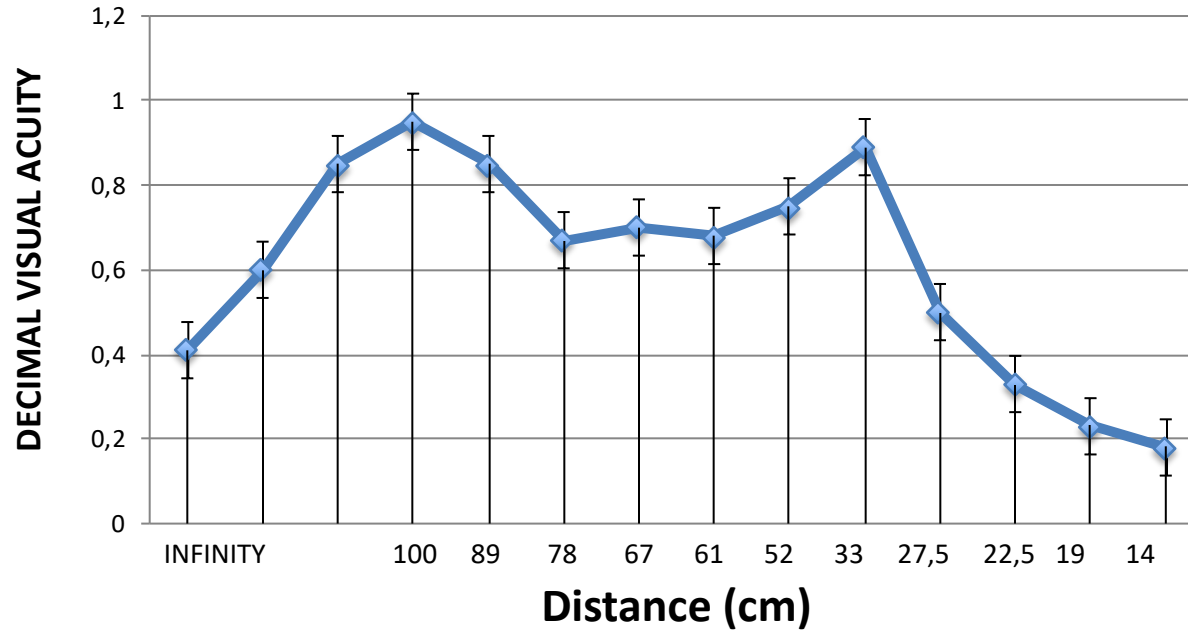
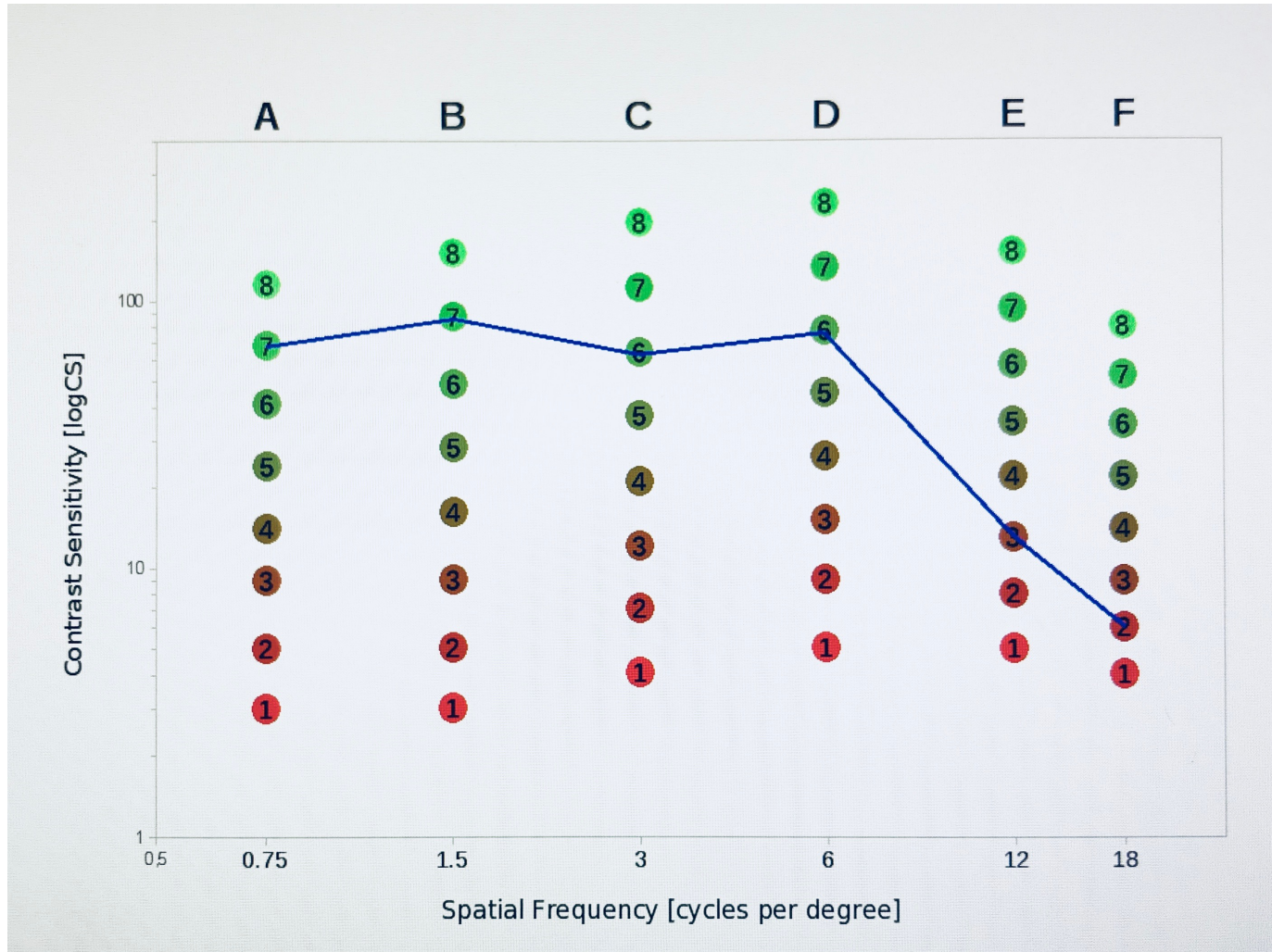
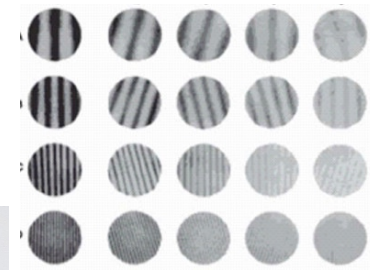


Tabla 1. Conversión de valores de la agudeza visual

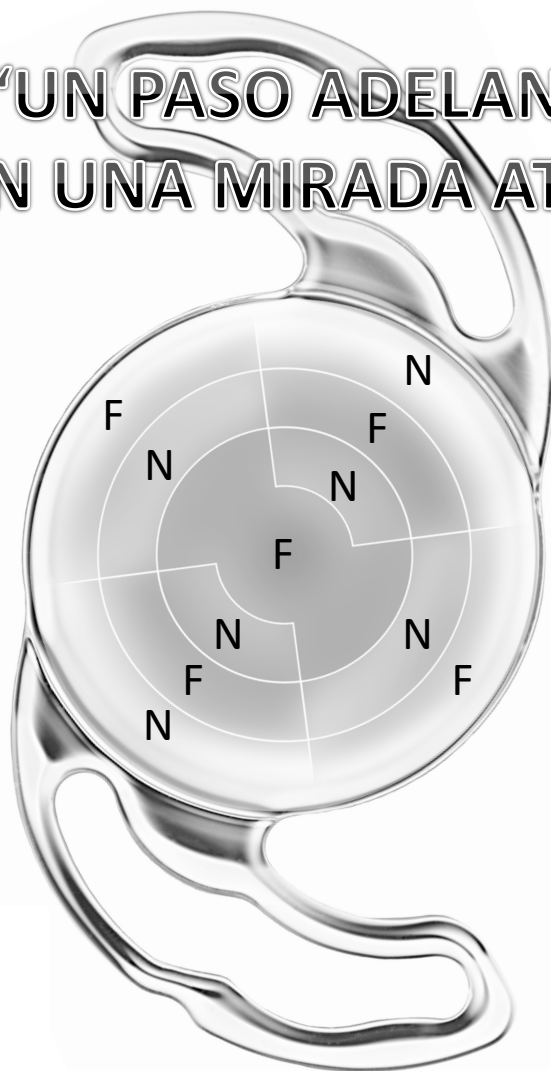
Decimal	Fración	Snellen (6 m)	Snellen (20 pies)	logMAR
0,10	1/10	6/60	20/200	1,0
0,12	1/8	6/48	20/160	0,9
0,16	4/25	6/37,5	20/125	0,8
0,20	1/5	6/30	20/100	0,7
0,25	1/4	6/24	20/80	0,6
0,32	1/3	6/19	20/63	0,5
0,40	2/5	6/15	20/50	0,4
0,50	1/2	6/12	20/40	0,3
0,63	2/3,2	6/9,5	20/32	0,2
0,80	4/5	6/7,5	20/25	0,1
1,00	1/1	6/6	20/20	0,0
1,25	5/4	6/4,8	20/16	-0,1

CONTRAST SENSITIVITY TEST



CTF - NVA

“UN PASO ADELANTE
CON UNA MIRADA ATRAS”



CONCLUSIONES

1.- BUENA VISION A TODAS LAS DISTANCIAS

2.- PUPILOINDEPENDIENTE

3.- NO HALOS Y POCO GLARE

VISION NATURAL

Gracias

